

Virtensys VIO-4001

Quick Start Guide for Windows® 2008 R2 SP1 (64 bit)

Scope

The scope of this Quick Start Guide is to provide clear guidance on provisioning virtualized I/O interfaces from the VIO-4001 I/O virtualization appliance to a Windows 2008 R2 SP1 server host. With Virtensys' VIO-4000 series server administrators can gain the benefit of I/O resources on-demand, in order to scale out their data center implementation.

Before you start

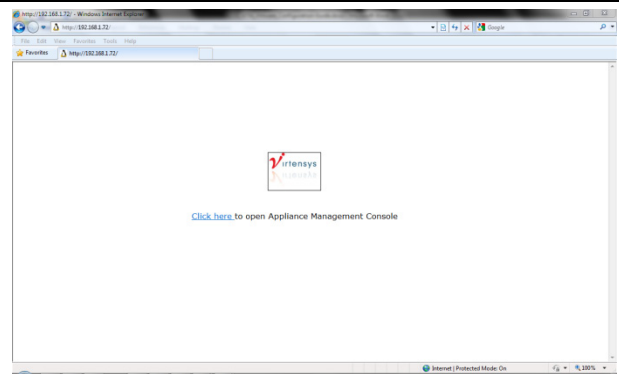
For the purposes of this Quick Start Guide it is assumed that the VIO-4001 is already fully installed and connected to supported PCIe Generation 2 servers via the SCA (Server Connection Adapter).

Refer to the VIO-4001 User Guide for further details on installation and setting up: www.virtensys.com/support

Configuring the VIO-4001 using the Management Console

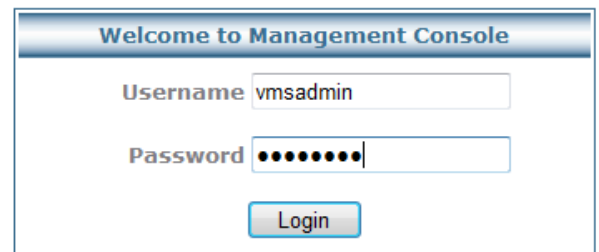
Step 1. Using your preferred web browser login into the Management Console.
Default IP Address = 192.168.1.10

Step 2. Select **Click here** to enter login screen

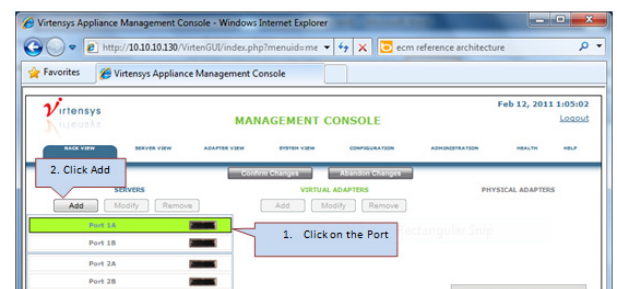


Step 3. Login with Administrator privileges:

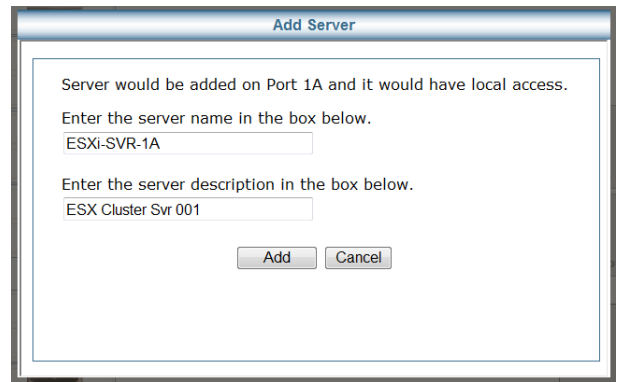
Login: **vmsadmin**
 Password: **vmsadmin**



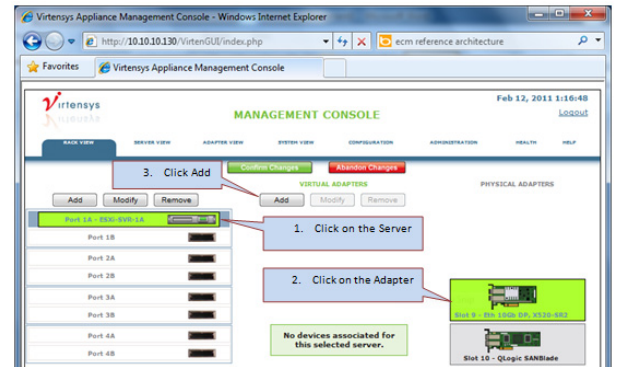
Step 4. From the "Rack View" tab, select the port that corresponds to the server that you want to provision. After the port is selected, Click **Add**.



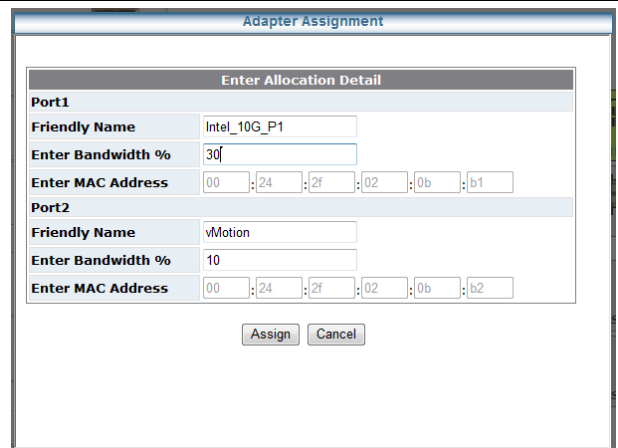
Step 5. Enter the server name and description in the “Add Server” dialog box. Click **Add**.



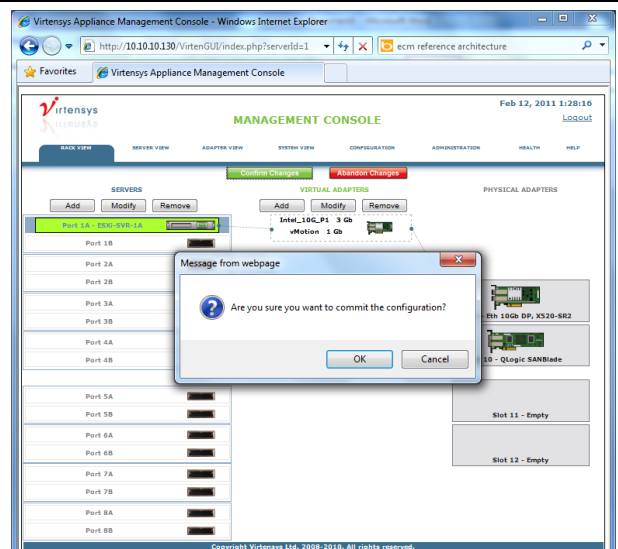
Step 6. If you would like to provision adapters at this time, select the newly created server, a physical adapter, and click **Add**. (You can continue to add more servers, or simply click **Confirm Changes** to save the newly created server to the appliance.)



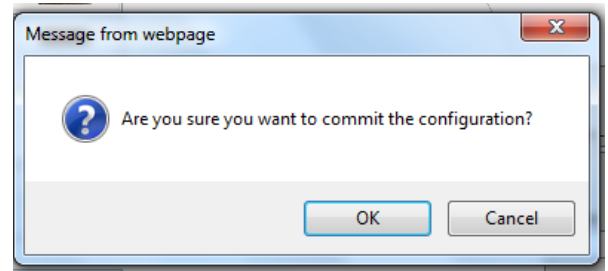
Step 7. In the “Adapter Assignment” dialog box, enter a “**Friendly Name**” for the adapter ports you are provisioning (administrators typically define the name based on the purpose of the network connection or application). If you are provisioning Ethernet ports, under “**Enter Bandwidth %**” enter the minimum bandwidth amount you’d like to provide to the server in multiples of 5. Click **Assign**.



Step 8. You will now see the “Physical Adapter” paired to the server, via the “Virtual Adapters”. You can select the server port and corresponding “Virtual Adapters” to **Modify** or **Remove** as required.



Step 9. When you have finished provisioning resources to your servers, **Confirm Changes** to commit the configuration.



Step 10. Windows 2008 R2 servers can be provisioned with the server powered off or powered on.

Step 11. Ensure you are logged into the Windows 2008 R2 server with local Administrator privileges, or equivalent.

Step 12. After the VIO-4001 has been provisioned to the Windows 2008 R2 server, you can confirm the devices are present in the Operating System by navigating to Windows Device Manager. You will see two QLogic Fibre Channel Adapters listed under "Storage Controllers", and two Ethernet controllers listed under "Other Devices".

Step 13. Insert the driver CD into the CD-ROM drive of the Windows 2008 R2 server.

Step 14. Install the Ethernet drivers:

- a. Browse to, and right-click on the Intel Windows 2008 R2 driver installer and Run As Administrator.
- b. Accept the prompt from User Account Control.
- c. At a minimum, choose to install the Intel PROSet driver, and complete the driver install.

Step 15. Install the Storage drivers:

- a. Find the QLogic Fibre Channel Adapters listed under Device Manager > Storage Controllers.
- b. Right-click a QLogic Fibre Channel Adapter and choose to Update Driver Software.
- c. Browse your computer for the Windows 2008 R2 QLogic drivers.
- d. Complete the driver install.

Step 16. After the Storage and Ethernet drivers are installed, then reboot the server.

Step 17. After the server reboots, log back in using a local Administrator equivalent account and launch a command prompt as Administrator. Run the following commands:

- a. **bcdedit /set {current} MSI forcedisable**
- b. **bcdedit /set {current} pciexpress forcedisable**

Step 18. Navigate to the Windows Device Manager. You will now see the two Intel Ethernet Server Adapter X520-2 listed under Network Adapters, and the two QLogic Fibre Channel Adapters (QLE2562).

Step 19. Right-click each of the Intel Ethernet Server Adapter X520-2 and navigate to the "Advanced" tab. Select Receive Side Scaling (RSS) and disable it.

Step 20. The VIO-4001 is now provisioned for Windows 2008 R2 SP1.
